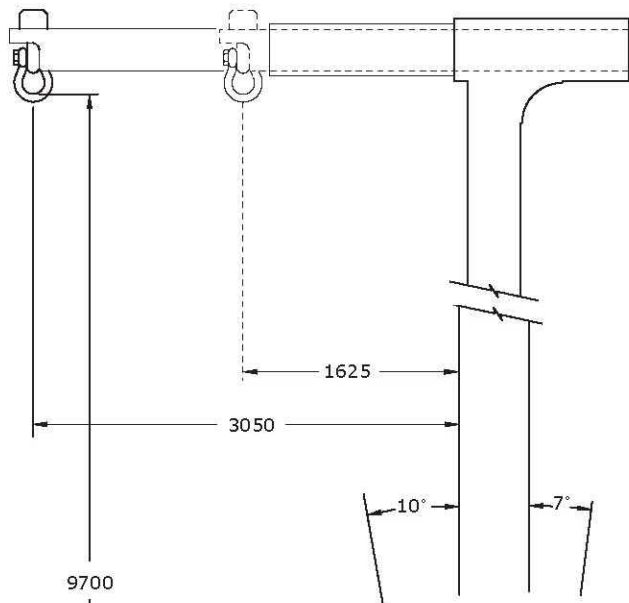


38,600 kgs @ 900mm Retracted
52,200 kgs @ 900mm Extended
63,600 kgs @ 600mm Retracted
20,000 kgs @ 3000mm Extended



Engine	GM 4.3 Litre, V6
Transmission	Rexroth Hydrostatic
Tyres	Front 42" x 25" x 30" Poly Rear 36" x 14" x 30" Poly
Gradient	Empty 50% Loaded 30%
Tilt	Forward 10° Backward 7°
Weights	complete 54,500 kgs counterweight 19,200 kgs (9 @ 2134 kgs each) Chassis 26,300 kgs Boom 5,900 kgs Boom Stand 450 kgs Forks, pair 2,300 kg s

